



**Part of Wilderness Resort...America's Largest Waterpark Resort!**

Wilderness Hotel | Glacier Canyon Lodge | Wilderness on the Lake | Wild Rock Golf Club | Sundara Spa

**608.253.4653**    **WildRockGolf.com**





# WHO WE ARE

Located on 600 acres in Wisconsin Dells, Wilderness Resort is America's Largest Waterpark Resort! Home to resort lodging, waterparks, restaurants, retail shops, attractions, an award-winning spa, and of course, championship golf, Wilderness Resort is the perfect destination for a fun-filled family vacation, meeting or special event.

## WE ARE **THRILLED**

We are excited for this opportunity to showcase our resort and its amenities. Wilderness is the complete package when it comes to hosting large-scale events. Our staff is one of our best resources and has the knowledge and experience to make your event a success.





# WE ARE CHAMPIONSHIP GOLF

Wild Rock was designed by Michael Hurdzan and Dana Fry, the architects of Erin Hills, site of the 2017 U.S. Open. The course's most notable topography is easily the old stone quarry with its rocky mounds and extreme elevation changes. Two other landscapes define the course – a woodland area with stream and the sandstone ridges for which Wisconsin Dells is famous, and former farmland with iconic red barn still preserved. The 30-mile-away views to the quartzite cliffs known as the Baraboo Bluffs are also breathtaking. In fact, as the designers walked the land in late fall 2004 after the last of the leaves had fallen and saw that clear view, they changed the routing to feature the vista.

The greens are expansive, fast and true, and impeccably maintained, with five sets of tees to satisfy scratch golfers to resort guests. The Declaration bent grass comes through Wisconsin winters extraordinarily well, in turn setting up the greens for an early spring season.

The course is home to the Wisconsin State Golf Association's Senior Tour Championship and hosted the Wisconsin PGA Section Championship in 2016. The current course record is 65.

There is a full practice area with driving range, putting green and chipping bunker.

Wild Rock has three Class 'A' PGA professionals on staff and two PGA apprentices. The management team hires people who love golf and love talking golf. Group and private lessons are available.









# COURSE OVERVIEW

Since opening on May 1, 2008, Wild Rock Golf Club has received many rave reviews including being rated "The #1 Golf Course in Wisconsin for 2016" by Golf Advisor.

Wild Rock is a stunning and unique championship golf course because it blends three different landscapes into a challenging and breathtaking round of golf. From its woodland area with a beautiful natural stream to the Dells' famous sandstone ridges combined with the rocky mounds of a former quarry, this course is so unlike any other, which is why it is loved by golfing enthusiasts. Golfers of all skill levels enjoy the challenges this course offers, including undulating greens and changes in elevation. And, with five sets of tees to choose from, Wild Rock truly provides a memorable round of golf for everyone. Come and see it for yourself. Call 608.253.GOLF for tee times.

## GPS SYSTEM

Every club car at Wild Rock Golf Club is equipped with a state-of-the-art GPS system which allows players to:

- Continuously trace their distance to the pin
- Receive pro tips for tricky shots
- Input their scores electronically
- Keep pace of others scores in tournament play
- See other carts on the course
- Order food from the clubhouse
- Receive weather warnings

## RATES FOR THE 2017 SEASON

Will vary from \$59 - \$95 for weekdays and \$69-\$110 for weekends. Resort guests receive a discount rate. The best available rates are available online at [www.wildrockgolf.com](http://www.wildrockgolf.com). Tee times can also be made by calling 608.253.GOLF. All golf fees include the use of the practice facility, 1/2 cart rental with GPS and 18 holes of golf. Tee times can be made by calling 608-253-4653.



## DIRECTOR OF GOLF OPERATIONS

Pat Stein is a member of PGA of America and has a Bachelor's degree in Marketing and Golf Management from Ferris State University in Big Rapids, MI.

## HEAD GOLF PROFESSIONAL

Josh Glendenning is a member of the PGA of America and has an Associate's degree in Golf Complex Operations and Management from San Diego Golf Academy in Chandler, AZ.

Website: [www.WildRockGolf.com](http://www.WildRockGolf.com)

Facebook: Like us on Facebook at Wild Rock Golf Club

Twitter: Follow us at WildRockGolf



# HOLE-BY-HOLE DESCRIPTION

Hole Descriptions (Please note there are 5 sets of tees to make this course playable for all):

Hole 1 - Par 5: 559, 530, 497, 428 or 416 yards depending on tee selection

This amazing first hole captures the essence of Wild Rock Golf Club. Depending on your tee shot, you might be able to reach the green in two. A lake guards the back of the green and a stream splits your second shot's landing area. Lay up and you'll have a short to mid iron to a relatively flat green. Be careful, if you go for it, the stream could wash your ball away.

Hole 2 - Par 4: 421, 399, 374, 341 or 309 yards depending on tee selection

A birdie is possible on this hole if you remember that the ravine is not as daunting as it looks. Staying left gives you more room and allows a better angle to the green. If you go too far to the right, the trees might block out your approach shot. A mid iron is all that is needed to reach a deep green protected by a few bunkers.

Hole 3 - Par 4: 464, 446, 414, 306 or 287 yards depending on tee selection

A par here will leave you feeling good. Unlike the second hole, the ravine is more in play on this hole. However, bunkers on the left and right of the fairway make this tee shot quite intimidating. With a good tee shot you should be able to carry the bunkers on the left and the fairway widens a lot over them. It's a mid to long iron to another deep green guarded well by some of the biggest bunkers on the course. The lake will swallow any balls too far to the right. Play short of the green if you can't make the target.

Hole 4 - Par 3: 223, 186, 164, 140 or 112 yards depending on tee selection

This is an amazing par three has water in front, to the right and even behind the green. The smart play here is a slight fade into the green. The bailout is short and to the left of the green.

Hole 5 - Par 4: 349, 325, 300, 259 or 234 yards depending on tee selection

This is the shortest par four on the course, and it offers a risk or reward tee shot. If you go for it, you'll have a wedge or less to the green, only if you don't find one of those menacing bunkers in the fairway. The smart play is to use a long iron or utility club off the tee to avoid the hazards. The second shot is uphill to a partially hidden green that has two shelves. The right side is higher and flatter than the left, but a small pot bunker guards the right portion of the green and long shots will find a steep slope that drops off behind the green.

Hole 6 - Par 5: 588, 551, 525, 504 or 457 yards depending on tee selection

Hole six is absolutely breathtaking, with the ridge falling dramatically to the east, leaving you unforgettable views up to 30 miles away. This is also the longest hole on the course. Playing downhill gives you an advantage off the tee, but you will want to avoid the right side of this hole. Three smart shots will help to conquer this hole. An added challenge is that the green is only 16 paces deep, so accuracy is a must on your third shot.

Also, watch out for the small bunker in front of the green!

Hole 7 - Par 4: 497, 476, 445, 360 or 338 yards depending on tee selection

Nature made this amazing hole, we simply added the grass. What you see here is all right in front of you. Hit it long and straight. Then, hit it long and straight again. The green is two-tiered with a false front.

Hole 8 - Par 4: 433, 412, 362, 313 or 260 yards depending on tee selection

This hole will play shorter than the card says. The left side of the fairway will give you the best angle to the green. The green is fairly small and has lots of undulation. A precise short iron is necessary to avoid the trouble that surrounds the green. You do not want to go long!

Hole 9 - Par 3: 211, 179, 146, 127 or 109 yards depending on tee selection

For hole 9, long is better than short. Balls short of the green will roll back towards the pond. Take enough club here and use the slope to help feed your ball to the green. Bunkers are found on the right and left of this green. The green is split into three distinctive shelves.





## HOLE-BY-HOLE DESCRIPTION (CONT)

Hole 10 - Par 5: 567, 547, 533 510 or 399 yards depending on tee selection

This is not a hole for the faint of heart. It is a long uphill journey with plenty of challenge to boot. You'll want to avoid the fairway bunkers to the left so you can get a better second shot. Ideally, you will want to drop the ball about 120 yards short of the green on the flat part. This will give you a short wedge to a small target green, protected by a pot bunker in front. Doom and gloom abound in front of the tees and to the right of the fairway. When you make it to the green, look back to enjoy the view and celebrate the success of completing this challenging hole.

Hole 11 - Par 3: 241, 223, 182, 156 or 128 yards depending on tee selection

Hole 11 represents the longest par three on the course. While length is the real challenge here, there is also plenty of room around the green, if you miss. Landing the ball off the hill will help guide your ball towards the hole. A large ridge dissects the middle of the green. Finding the right section of green will help to avoid a possible three putt.

Hole 12 - Par 4: 450, 424, 403, 381 or 364 yards depending on tee selection

Guarded by boulders that were left over from the old quarry, Hole 12 requires two good shots. A three-wood might be the smart play here helping to avoid the bunker complex off of the tee. A giant rock wall guards the right side of this hole from 150 yards in, so accuracy is a key to reach the green. There is plenty of room to miss the green left, but anything right will carom off the rocks.

Hole 13 - Par 4: 453, 430, 403, 364 or 304 yards depending on tee selection

If you thought the last hole was difficult, you might be in for trouble! A long and straight drive is what is needed here. Going over the left bunkers might give you an advantage but it will also be very risky. Play your tee shot towards the right bunker and you will be left with about 150 to 170 yards. A demanding green that is lies against the edge of the quarry's canyon will require your second shot to be the most accurate on the course. Anything left, your ball will find the boulders below-anything right could find trees. A big ridge divides the green, with the slope running away from you in the back. Only tour pro's or a lucky bounce, will find the back left portion of this green.

Hole 14 - Par 5: 535, 514, 487, 458, or 407 yards depending on tee selection

Your tee shot will land in what used to be the old rock quarry. The canyon guard's hook shots and old gravel mounds protect the right side of the fairway. This hole has the smallest green on the course and that makes it very difficult to reach in two. Any shots right of the green will fall into a deep pit area. The best play is to lay up short of the green, leaving you a short iron to the green.

Hole 15 - Par 3: 179, 166, 134, 130 or 118 yards depending on tee selection

Hole 15 is an intimidating par three that requires all-carry over the quarry. Six tee boxes dot the ridge allowing you to pick your poison. There's some room behind and left of the green, as well as elevated tees which will help to carry your shot a little further. Anything short means the quarry gets to keep your ball.

Hole 16 - Par 4: 456, 415, 381, 352 or 329 yards depending on tee selection

The old quarry mounds make for a unique contrast to Hole 16. It goes slightly uphill, and a long tee shot aimed at the right bunkers will leave you with a good angle to the green. You'll want to avoid the bunker and the fescue mounds on the left. If you're on the right side of the fairway, use the barn and silo to help you line up your next shot. A pot bunker dots the front of the green which is relatively flat.

Hole 17 - Par 4: 356, 334, 306, 280 or 259 yards depending on tee selection

Staying slightly right off the tee for Hole 17 is the best play. Too far left might leave trees blocking your second shot. You don't need to do anything fancy for this hole. Picking the right club to the green is your challenge. The green has a lot of undulation and will leave you a challenging putt if you find the wrong shelf.

Hole 18-Par4:436, 412,371,337 or 302 yards depending on tee selection

Hole 18 is all downhill, giving you an advantage. You'll want to aim for the bunker's straight ahead with a slight fade and then hope your ball will run. If you go too far to the left, you will block your view to the green, or worse yet, you might find yourself in the woods. Be careful, the green runs away from you, so take enough club for that back pin placement. Avoid the largest bunker on the course which gobbles up any shots long. Go for birdie and conquer the hole.

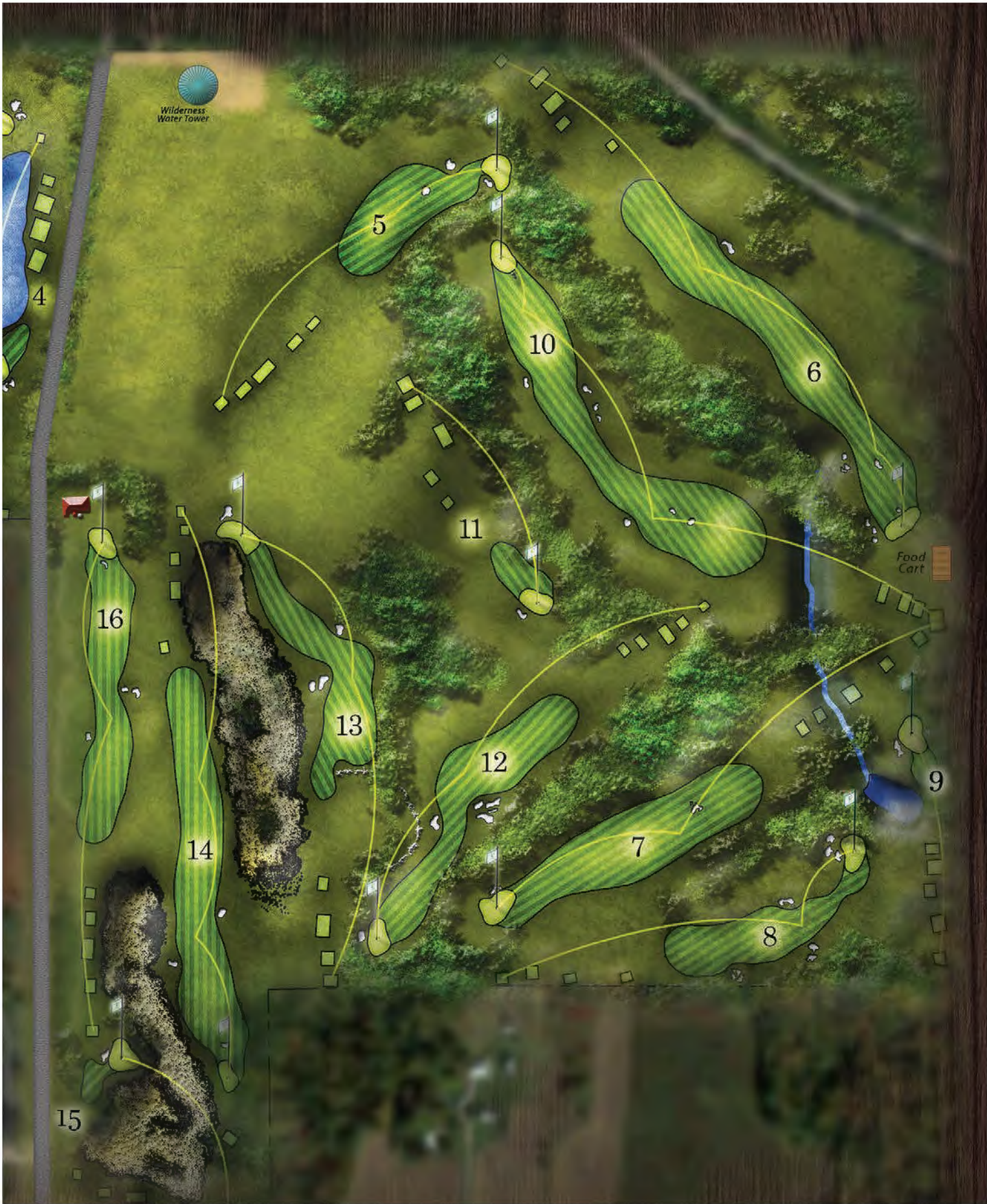


# WILD ROCK<sup>SM</sup> GOLF CLUB AT THE WILDERNESS



Hole #	Par	Quartzite Tees	Granite Tees	Shale Tees	Limestone Tees	Sandstone Tees
1	5	559	530	497	428	416
2	4	421	399	374	341	309
3	4	464	446	414	306	287
4	3	223	186	164	140	112
5	4	349	325	300	259	234
6	5	588	551	525	504	457
7	4	493	460	397	360	338
8	4	433	412	362	313	260
9	3	211	179	146	127	109
<b>out</b>	<b>36</b>	<b>3741</b>	<b>3488</b>	<b>3179</b>	<b>2778</b>	<b>2522</b>
10	5	567	547	533	510	399
11	3	241	223	182	156	128
12	4	450	424	403	381	364
13	4	453	430	403	364	304
14	5	535	514	487	458	407
15	3	179	166	148	130	118
16	4	456	415	381	352	329
17	4	356	334	306	280	259
18	4	436	412	371	337	302
<b>in</b>	<b>36</b>	<b>3673</b>	<b>3465</b>	<b>3214</b>	<b>2968</b>	<b>2610</b>
<b>TOTAL</b>	<b>72</b>	<b>7414</b>	<b>6953</b>	<b>6393</b>	<b>5746</b>	<b>5132</b>
rating/slope		76.5/141	74.5/135	70.8/134	67.5/124	69.6/124









**444 ROOMS AT WILDERNESS HOTEL**

## **WILDERNESS HOTEL**

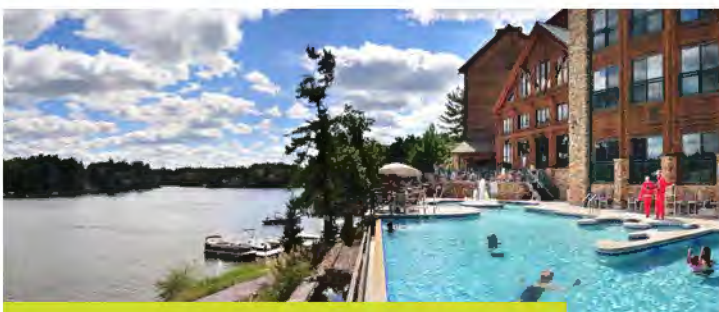
Wilderness northwoods inspired hotel rooms feature flat screen televisions, mini-fridges, microwaves and coffeemakers. With a variety of room styles that will accommodate 2 to 7 persons.



**460 ROOMS AT GLACIER CANYON LODGE**

## **GLACIER CANYON LODGE**

Choose from 1, 2 or 3 bedroom units at this fabulous lodge which is connected to our main resort via an enclosed skywalk and also connected to the conference center. These units feature fully-equipped kitchens, as well as cookware, dishes and silverware.



**108 CONDOS AT WILDERNESS ON THE LAKE**

## **WILDERNESS ON THE LAKE**

The 2 and 3 bedroom units at this serene retreat are spacious and feature a full kitchen, dining area and living room along with a private four-season sunroom complete with fireplace, whirlpool tub and lakeside views.



**76 FRONTIER CONDOS  
40 VACATION VILLAS  
35 GOLF COURSE CABINS**

## **CABINS, CONDOS & VILLAS**

Choose from 2-5 bedroom Wilderness cabins, condos or villas for spacious entertainment areas, full kitchens, living and dining rooms, washer/dryer, gas fireplace and televisions. All cabins are located in the woods near Wild Rock Golf Club.



# WE ARE **LODGING**

SO MANY DIFFERENT LODGING OPTIONS FOR YOU AND YOUR GUESTS.

Wilderness Resort has over 1,000 lodging options: From northwoods-themed hotel rooms at Wilderness Hotel and Glacier Canyon Lodge, to family-sized condos at Wilderness on the Lake. Plus Wilderness stand-alone villas, condos and cabins offer spacious luxury and privacy. All of our guest lodging includes use of our waterparks and shuttle buses, so your guests can take advantage of your event and have their own vacation getaway.





# WE ARE **WATERPARKS**

## **INDOOR WATERPARKS**

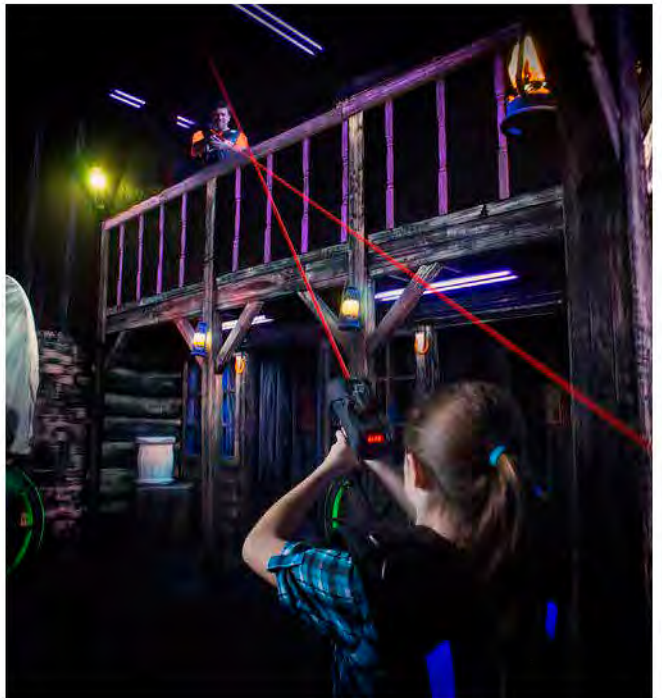
- Klondike Kavern: 65,000 SQ FT indoor waterpark at Wilderness Resort
- Wild WaterDome: 70,000 SQ FT indoor waterpark at Wilderness Resort
- Wild West: 70,000 SQ FT indoor waterpark at Wilderness Resort
- Cubby's Cove: 35,000 SQ FT indoor/outdoor at Wilderness on the Lake

## **OUTDOOR WATERPARKS**

- New Frontier: 100,000 SQ FT outdoor waterpark at Wilderness Resort
- Lake Wilderness: 40,000 SQ FT outdoor waterpark at Wilderness Resort
- Lost World: 3.2 Acre outdoor waterpark at Glacier Canyon Lodge
- Cubby's Cove: 35,000 SQ FT indoor/outdoor at Wilderness on the Lake









# WE ARE **ATTRACTIONS**

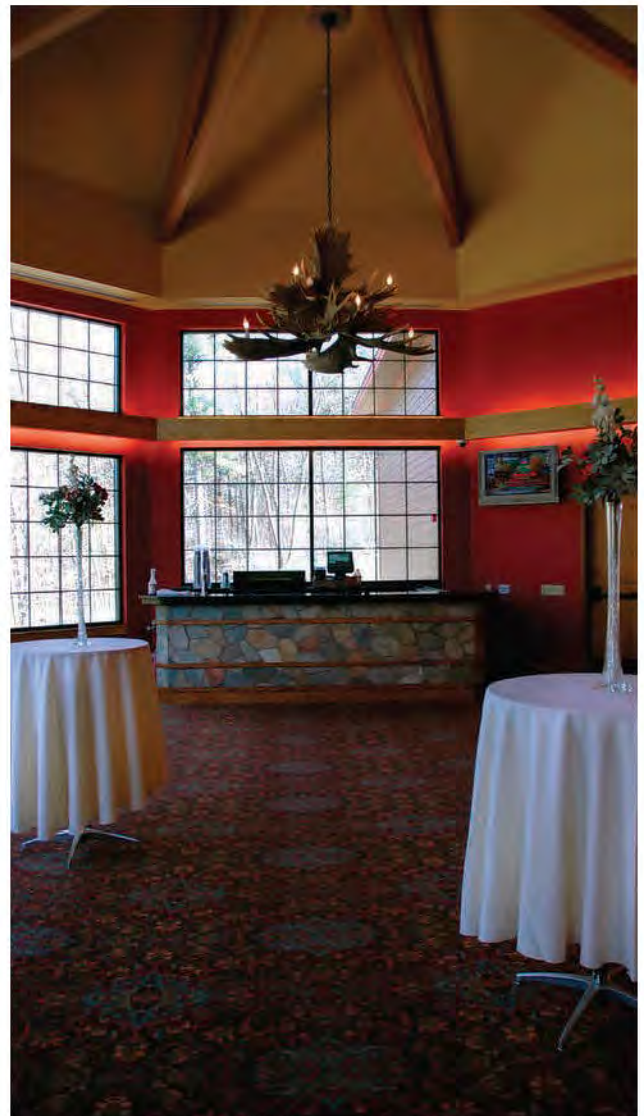
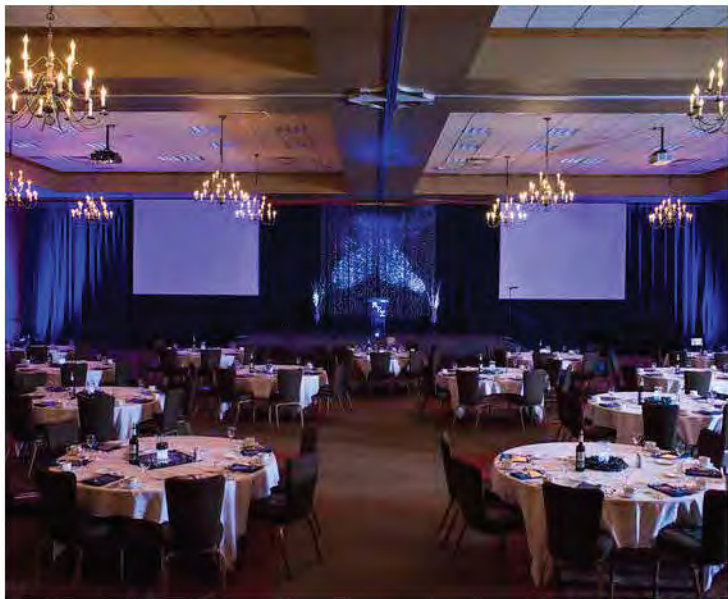
## **ATTRACTIONS FOR TEAM BUILDING AND MEMORY MAKING.**

Wilderness Resort has attraction fun for all ages and interests. We believe that the best getaways are built on making memories. And what better way to remember your vacation than with these fun attractions:

- NEW Timberland Play Park
- NEW Virtual Reality Game
- Canyon Zip Line Tour
- Indoor High Ropes Course
- Bumper Boats
- Two Story Laser Tag Arena
- Laser Maze
- 3D Blacklight Mini Golf
- 18-Hole Outdoor Mini Golf
- Multi Level Indoor Go-Kart Track
- Outdoor Go-Karts and Kiddie-Karts
- WildKids Crafts & Games
- Mega Prize Arcades









# WE ARE **MEETINGS & EVENTS**

The Glacier Canyon Conference Center offers stunning spaces, beautiful landscaping and two gorgeous ballrooms, both of which feature adjacent outdoor areas. There are a multitude of rooms for breakout meetings, plenty of free parking, and a business center. Our experienced and friendly staff will work with you to create a seamless event that will exceed your expectations!

Our full-service catering team is available to work with you on menus and special themed dinners and box lunches.



## **THE WILDERNESS BALLROOM**

Featuring 8,812 square feet of space, including two permanent bars in the back foyer that leads to an extended outdoor patio. Chandeliers cloak the room with ambiance from the 18' ceilings. Multiple room set-ups are available to provide just the right space for your event.

## **THE SANDSTONE BALLROOM**

This ballroom is a whopping 14,832 square feet of space with multiple sets of doors leading out to a cement patio and landscaped lawn and gardens. The entire room may be used allowing ample space for your guests, large dance floor, DJ or band or it may be divided to provide a more intimate setting.









# WE ARE DINING

## RESTAURANTS, EATERIES, COFFEE SHOPS AND MORE

Deciding where to eat at Wilderness Resort may prove to be a challenge! Check out all of these amazing options:

### RESTAURANTS

- Wild Canyon Café
- Survivor's Bar & Grill
- Thirsty Buffalo Bar & Grill
- Canyon Ridge Tap Room
- Tommyknockers Pub & Grill
- Field's at the Wilderness
- Sarentos Italian Restaurant
- Monk's at the Wilderness
- Whispering Pines

### EATERIES & MORE

- Grizzly's Grill & Kodiak Kanteen
- Lakeview Eatery
- Wooly's Subs & Smoothies
- Mackinack Snack Shack
- The Big Dig
- Pistol Pete's Ice Cream
- Klondike Pizza Kitchen
- Yukon Yogurt
- Plus 5 Coffee Shops!







## DRIVING DISTANCE

CITY	DISTANCE
Madison	51miles
Rockford	118 miles
Milwaukee	119 miles
Green Bay	158 miles
Chicago	192 miles
Minneapolis	218 miles



# WE ARE **SPA LUXURY**

## **SUNDARA IS SANSKRIT FOR BEAUTIFUL.**

At Sundara we offer an adult-only sanctuary from stress. We are electronics-free in all common areas, giving you permission to unplug. The goal is for you to slow down and fully experience our oasis of calm. Our full-service spa offers a range of treatments that blend ancient healing principals with modern wellness to deliver good-for-you benefits. As a guest of Sundara you have access to our luxurious amenities including the purifying bath ritual, heated outdoor infinity pool, tranquility garden, meditation trail and hammock retreat. Our chef-prepared cuisine is seasonally inspired to nourish and delight. We look forward to energizing your soul.





## WILDERNESS RESORT FACT SHEET

### PROPERTY OVERVIEW:

The Wilderness Resort, America's largest waterpark resort, offers the perfect location for any fun-filled family getaway.

All of the indoor and outdoor waterparks are exclusively for resort guests. In addition, hotel guests receive discounted golf rates, and a complimentary shuttle service is available to take guests wherever they want to go on resort grounds.

#### WILDERNESS HOTEL

##### THE NEW FRONTIER REGION (Eastern portion of the hotel)

- The New Frontier front desk area for guests who are staying at the main resort to check-in, the Wild Canyon Café (a family-style restaurant), Tommy Knockers Watering Hole, a gift shop and a General Store
- Klondike Kavern indoor waterpark
- Wild WaterDome indoor waterpark
- New Frontier outdoor waterpark
- Ok Corral Lazer Tag Arena and Marshal Training Lazer Maze
- Polk-a-Dot Pots, Paint Your Own Pottery
- Wilderness Canyon Canopy Zip Line Tour
- Wilderwoods Indoor Go-Kart Trail
- Glitter Gulch Mega Arcade
- Klondike Boardwalk
- Klondike Pizza Kitchen
- Klondike Kate's Libations
- Yukon Yogurt

##### THE WILD WEST REGION (Western portion of the hotel)

- The Wild West front desk, Trading Post Gift Shop, Goody Gum Drop Candy Shoppe and O.P. Marketplace convenience store.
- Wild West indoor waterpark
- Timberland Play Park, a 30,000-square-foot indoor area featuring six slides plus swings, tunnels, an arched bridge, and 39 climbs and crawls. There's also a separated gated area for those 4 and under.
- The Northern Lights Mega Arcade
- The Northern Lights Sky Ropes Course, with 42 challenges in varying degrees of difficulty
- The Wild Abyss 3-D, black light mini golf course
- CYvrSPACE Virtual Reality Arena
- The Thirsty Buffalo Saloon
- The Giddy Up Pub
- Pistol Pete's Beans & Ice Cream
- Lake Wilderness outdoor waterpark
- Mackinac Tap & Snack Shack
- Real estate offices
- A fitness center

#### WILDERNESS HOTEL ROOMS

There are 444 guestrooms with amenities including

- In-room refrigerator, microwave and color TV
- Private deck or balcony
- Hairdryers, coffeemakers and coffee packets
- Wireless internet access
- Select rooms feature hide-a-bed sofas, fireplaces, wet bars or whirlpools

#### VACATION VILLAS:

The resort has 40 vacation villas available for rent subject to availability. Each 2,000-square-foot, log-themed villa sleeps up to 8 people and includes:

- Two bedrooms, two bathrooms, a living room with gas fireplace, dining room and fully equipped kitchen with all appliances, washer and dryer, and cooking utensils
- Two-person whirlpool in the upstairs bathroom
- Full access to all resort amenities

#### FRONTIER CONDOMINIUMS:

The resort has 76 Frontier condos available for rent, subject to availability. The Frontier four-condo units border the Little Links Course.

- Each 2,300-square-foot unit sleeps up to 14 people features three or four bedrooms, three bathrooms, and living and dining areas
- Three other units feature the Wilderness' classic "Townhouse" style, offering two bedrooms and two bathrooms, as well as living and dining areas
- All feature a full range of appliances and guests have full access to all resort amenities

#### CABINS & RETREATS:

The resort has 19 four- and five-bedroom cabins & retreats. Each is fully furnished and ranges in size from 3,120-4,350 square feet. They have four bathrooms, a four-person hot tub, family room with fireplace, and deck overlooking the golf course. Select four bedroom cabins also include Home Entertainment Centers complete with a 120" movie screen with front projection television system, Dolby Digital Surround sound System and DVD player.

In the summer of 2005, the resort unveiled 16 beautiful, 1,300-square-foot cabins to its line-up of great lodging options. Each cabin is fully-furnished, and has three bedrooms plus kids' bunk area, two bathrooms, a living room with sofa sleeper, fireplace, large outdoor deck and full kitchen.

A complimentary shuttle is available to transport guests to the main resort.



#### WILDERNESS ON THE LAKE:

In July 2003, the resort opened Wilderness on the Lake, a premier 108-unit condominium complex overlooking beautiful Lake Delton. Each two- and three-bedroom unit is fully-furnished in rich hues and fine tapestries, and includes a four-season patio with four-person hot tub.

The facility also has its own indoor/outdoor waterpark, infinity pool with vanishing edge, sand beach and full access to all resort amenities.

#### GLACIER CANYON LODGE UNITS:

In July 2006, the resort opened Glacier Canyon Lodge, a premier 460-unit condominium resort which connects to the main Wilderness resort via a fully-enclosed walkway. The upscale facility offers double queen guest rooms as well as 1-, 2- and 3-bedroom fully-furnished units. The facility also has its own 3.2 acre Lost World outdoor waterpark and full access to all resort amenities.

#### OUTDOOR WATERPARKS

##### LAKE WILDERNESS OUTDOOR WATERPARK:

This 40,000-square-foot outdoor waterpark is located behind the Wild West Region of the Wilderness Hotel & Golf Resort and it features:

- Island Pool, a 13,000-square-foot outdoor pool with built-in lounging ridge
- Rafter's Rage Tube Slide: A 300-foot tube slide
- Rafter's Rage Body Slide: A 220-foot body slide with plunge pool
- Lil' Chutes: Two, 100-foot speed slides with plunge pool
- A lap pool
- A children's wading pool with hands-on water activity island and spray features
- Mackinac Snack Shack serving up convenience foods, snacks and beverages
- 9 high-end cabanas along the edge of Lake Wilderness are available for rent. They offer guests the opportunity for private seating, TV viewing, towel service and food and beverage services.

##### NEW FRONTIER OUTDOOR WATERPARK:

This 95,000-square-foot outdoor waterpark is located in the New Frontier Region of the Wilderness Hotel & Golf Resort and it features:

- Prospector's Creek, a 600-foot lazy river
- Gold Rush Tube Slide, a 400-foot tube slide that launches off a 40-foot high tower and Timber Falls, a lighting fast body slide that also starts from the same tower

- Bear Foot Island Sprayground, that features spraying fountains, exploding geysers, shooting water jets and other fun water play features
- Toddler's Cove, A zero-depth play area with tree swing, smaller slides, bubbling geysers and other fun activities
- Two pools
- Margarita's Swim-Up Bar for adults only
- Over an acre of deck space with lounge chairs and tables

#### LOST WORLD WATERPARK:

Please note the Lost World Waterpark is not located at the Wilderness Hotel & Golf Resort. However, main resort guests can utilize it. It is located at Glacier Canyon Lodge and is an amazing 3.2 acre outdoor adventure. It features:

- Lunar Loop extreme thrill slide, which features a five story drop before propelling thrill seekers into a nearly vertical spiral loop at speeds of up to 40 mph
- Cosmic Drop, extreme which features a straight, stomach-dropping, five-story plunge that feels like a free fall at speeds of up to 40 mph
- Halley's Comet Racers, which start out in an enclosed flume where thrill seekers ride on a mat head-first through steep twists, turns and stomach drops. Then, riders gain speed onto four open racing lanes that streak down to a finish line below. Only the most brave hearted will win this race that delivers maximum thrills.
- The Lost World River Adventure River that includes fast rapids, uphill currents, twisting slides, swirls and runoffs
- A swimming pool with a lily pad bridge
- Dinosaur-themed play 'n spray structure
- Water basketball area
- Outdoor hot spa
- Dinosaur Crossing WildKid's Club activity area
- 15 private cabanas available for rent

#### CUBBY'S COVE WATERPARK:

Please note Cubby's Cove Waterpark is not located at the Wilderness Hotel & Golf Resort. However, main resort guests can utilize it. It is located at the Wilderness on the Lake and spans 15,000 square feet. It includes:

- An Infinity pool with vanishing edge that overlooks Lake Delton
- The Watering Hole, a small zero-depth spray and play are perfect for small children
- Scenic views of Lake Delton
- Private sandy beach\

## INDOOR WATERPARKS

### WILD WEST INDOOR WATERPARK:

This 70,000-square-foot waterpark is located in the Wild West Region of the Wilderness Hotel & Golf Resort and it features:

- The Black Hole, this outrageously fun tube slide takes two guests on an exciting tunnel ride before they race into a huge bowl where they spin around and descend into a corkscrew that center that drops them down into a landing pool.
- Bumper Boats, Crash into your friends in the area's only indoor bumper boats.
- The Fantastic Voyage, the Dells' only five-person raft ride that takes guests on an exciting journey through twisting and turning tunnel ways together. When the ride is completed, a conveyor belt system returns the huge raft to the top of the ride so all you need to do is walk back to the beginning for more back fun!
- Ransack Ridge, a six-level, free-standing play feature which is the largest of its kind ever to be created by NBGS International, makers of fine waterpark equipment. It features a 750-gallon car-tipping bucket, the largest ever created that spills water every 3 minutes. Water blasters, animated targets and various water jets, all in a Wild West theme, add to the excitement of this intensely fun new waterpark.
- Four Speed Slides
- Indoor/Outdoor Hot Spa
- The Thirsty Buffalo, enjoy hearty burgers soups and salads while looking out over the Wild West Waterpark
- Grizzly's Grill offering convenience foods, snacks and beverages

### KLONDIKE KAVERN INDOOR WATERPARK:

This 65,000-square-foot waterpark is located in the New Frontier Region of the Wilderness Hotel & Golf Resort and it features:

- Bonanza Bluff, a huge play feature which includes 50 play and spray features, a 750-gallon tipping bucket, a 20-foot body slide and two 4-foot side by side children's slides
- The Hurricane, Experience the Dells' tallest indoor 4-person, family raft ride which plummets thrill seekers at a 45 degree angle down 58 feet where they enter a funnel at a pulse-pounding 20 mph. There, they are propelled up the opposite side of the funnel and experience a momentary Zero-Gee experience before exiting into a splash into a landing pool below. Fog machines, strobe lights and sound effects add to the thrills of this amazing ride.
- Bonanza Brook, A 400-foot Lazy River
- The Claim Jumper Challenge Slideboarding, two 500-foot tube rides that incorporate a gaming experience into waterslides. There's even an app so riders can practice their technique.

- A 180-foot body slide
- Indoor/outdoor pool
- Sulfur Springs Indoor/outdoor hot springs
- Plenty of lounging space, patio furniture and televisions
- Kodiak Kanteen offering convenience foods, snacks and beverages

### WILD WATERDOME INDOOR WATERPARK

This 70,000-square-foot waterpark is located in the New Frontier Region of the Wilderness Hotel & Golf Resort and it features an amazing, state-of-the-art Foil Tec roof that actually allows guests to tan indoors year-round and for plants to grow inside. The roof is also very energy efficient and saves the resort over \$16,000 a month in utility fees compared to the resort's other two indoor waterparks. This fun waterpark is also home to:

- The nation's largest indoor wave pool, The Great Wave, measuring 15,450 square feet this unbelievably cool attraction is capable of generating waves up to 5 feet tall
- A 2,200-square-foot zero-depth play lagoon
- Margarita's Swim-Up Bar for adults only
- The Dueling Mammoths, a high-energy family tube ride that allows families to race against each other through twisting and turning tunnels to see who is the fastest9 "cave-themed" private cabanas available for rent
- Plenty of deck space for kicking back, relaxing and catching a few rays
- Wooly's Eatery and Raccoon Salon offering convenience foods, snacks and beverages
- Survivor's Bar & Grille serving up great beverages and American classics in the mezzanine level.

### CUBBY'S COVE INDOOR WATERPARK

Please note Cubby's Cove Waterpark is not located at the main Wilderness Hotel & Glacier Canyon Lodge area. However, main resort guests can utilize it. It is located at the Wilderness on the Lake and spans 35,000 square feet. It includes:

- An interactive multi-level aquatic kids play structure complete with play and spray features as well as two smaller body slides that are perfect for introducing toddlers and young children to waterparks.
- Indoor/outdoor hot spa
- Water basketball area



## RESTAURANTS

### SARENTO'S ITALIAN RESTAURANT & PIZZERIA:

This fantastic Italian restaurant features everything from pizza to pasta, as well as veal, chicken and steak entrees, all served with impeccable service. The restaurant has one of the area's largest selections of fine wines with 70 percent being Italian and the rest consisting of noteworthy California and French labels.

### FIELD'S AT THE WILDERNESS PREMIER STEAK HOUSE:

Designed by Frank Lloyd Wright protégé James Dresser, this fine dining establishment offers exquisite food in an elegant yet relaxed setting. The menu features prime cuts of steak, chops and fresh grilled seafood, along with fabulous appetizers.

- A copper-covered, wood burning oven
- A mahogany wine case displaying over 150 varieties of fine wine
- Three stone-hearth fireplaces
- Bar and lounge with stage area for live entertainment
- Four private rooms with seating from eight to 80
- Reservations recommended — (608) 253-1400

### WILD CANYON CAFÉ:

This rustic-themed family restaurant is located off the New Frontier lobby area. The 240-seat restaurant serves breakfast, lunch and dinner in a unique "wilderness" atmosphere.

### THIRSTY BUFFALO

A fun sports bar located above the Wild West Waterpark that includes hearty burgers, fresh salads and other delicious food.

### SURVIVORS BAR & GRILL

A fun sports bar located above the Wild WaterDome that includes many favorites fresh off of the grill.

### KLONDIKE PIZZA KITCHEN:

Delicious pizza by the slice or entire pie bar located above Klondike Kavern in the Klondike Boardwalk area.

### MONK'S BAR & GRILL:

A fun sports bar which features amazing classic and gourmet burgers, as well as specialty sandwiches, salads and delicious entrées.

The resort is also home to:

- Wild Rock Golf Club – An award-winning championship 18 hole gold course
- The Woods – A 9-hole executive golf course with a signature island green
- Wilderland – An outdoor park area with grills located by the Frontier Condominiums, it also has an outdoor movie screen for free movie nights in the summer.

## RESERVATIONS

For reservations or additional information please call 1.800.867.WILD (9453) or visit [WildernessResort.com](http://WildernessResort.com).

Wilderness Territory, Wilderness Hotel & Golf Resort and Wild Rock are registered Service Marks.


Glacier Canyon Lodge, Wilderness Resort and Wilderness on the Lake are Registered Trademarks.





Part of Wilderness Resort...America's Largest Waterpark Resort!

Wilderness Hotel | Glacier Canyon Lodge | Wilderness on the Lake | Wild Rock Golf Club | Sundara Spa

608.253.4653    [WildRockGolf.com](http://WildRockGolf.com)